

PART OF N.W. 1/4 OF SECTION 30, T.7N., R.1W., S.L.B. & M.

PREFIX: 17-062 62-1

TAXING UNIT: 11

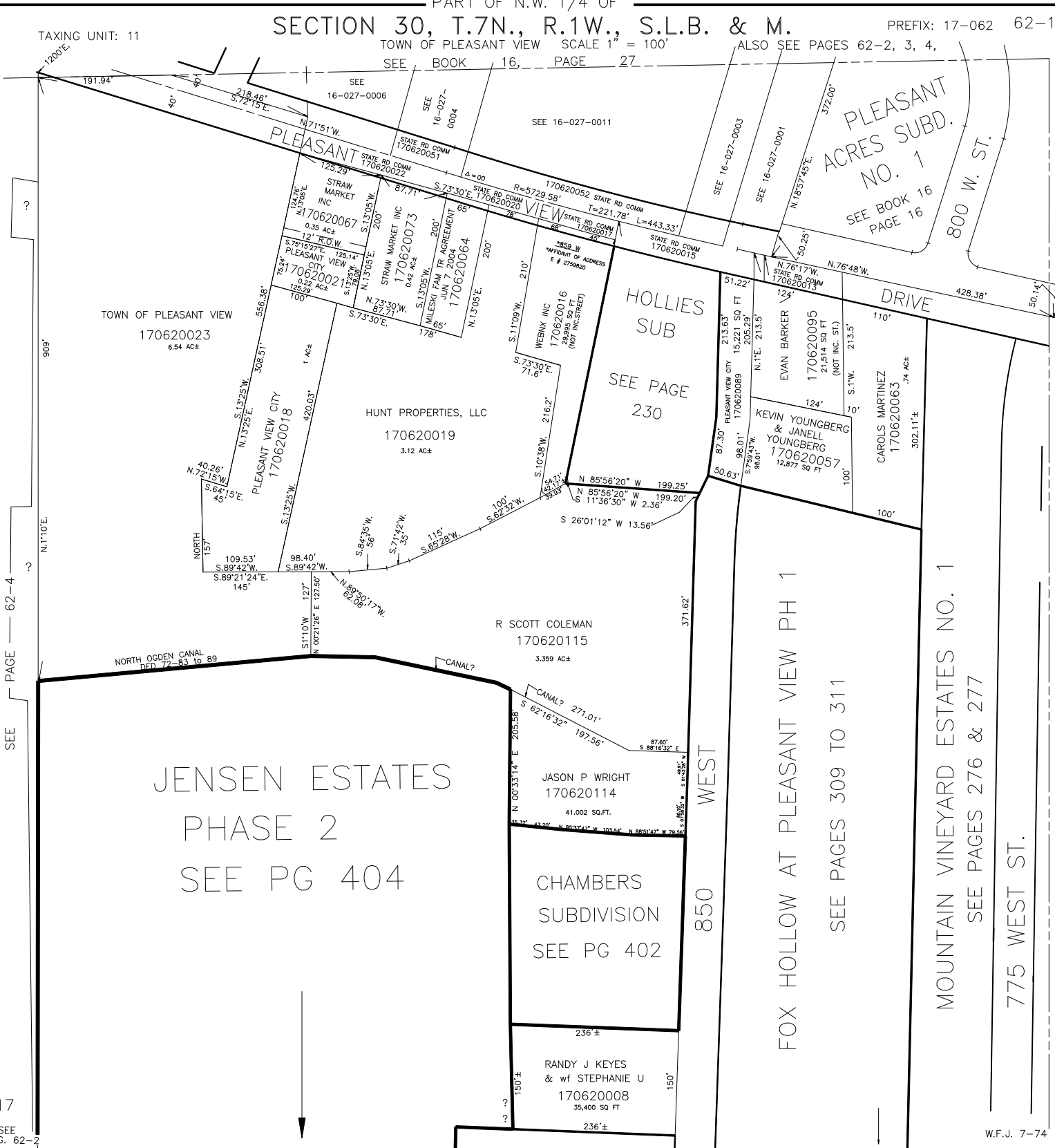
TOWN OF PLEASANT VIEW SCALE 1" = 100'

ALSO SEE PAGES 62-2, 3, 4,

SEE BOOK 16, PAGE 27

PLEASANT ACRES SUBD. NO. 1
SEE BOOK 16 PAGE 16

800 W. ST.



TOWN OF PLEASANT VIEW
170620023
6.54 AC±

PLEASANT

STRAW MARKET INC
170620067
0.35 AC±

PLEASANT VIEW CITY
170620021
0.42 AC±

PLEASANT VIEW CITY
170620018
1 AC±

HUNT PROPERTIES, LLC
170620019
3.12 AC±

HOLLIES SUB

SEE PAGE 230

EVAN BARKER
170620095
21.54 SQ FT
(NOT INC. S.I.)

KEVIN YOUNGBERG & JANELL YOUNGBERG
170620057
12,877 SQ FT

CAROLS MARTINEZ
170620063
.74 AC±

R SCOTT COLEMAN
170620115
3.359 AC±

JENSEN ESTATES
PHASE 2
SEE PG 404

JASON P WRIGHT
170620114
41,002 SQ.FT.

CHAMBERS
SUBDIVISION
SEE PG 402

RANDY J KEYES
& wf STEPHANIE U
170620008
35,400 SQ FT

850 WEST

FOX HOLLOW AT PLEASANT VIEW PH 1

SEE PAGES 309 TO 311

MOUNTAIN VINEYARD ESTATES NO. 1

SEE PAGES 276 & 277

775 WEST ST.

SEE PAGE 62-4

17

SEE PG. 62-2

W.F.J. 7-74